



REQUEST FOR QUOTATION – 44/2014

NEW POST-FORMED TOPS, MIRROR SURROUNDS AND CUPBOARDS FOR THE TERRACOTTA SUITE AT THE DURBAN ICC

Background

The Durban ICC is one of the world’s leading events and meetings destinations. In order to maintain the extremely high international standards as a facility it is important that we have the correct infrastructure, furniture and fittings in the various areas so that our operations run optimally thereby ensuring efficient client service.

1. Purpose of the request for proposal

The Durban ICC requires a contractor to supply and install post-form tops, hanging cupboards and mirror surrounds for the Terracotta Suite.

2. Specifications

2.1. Terracotta 2

Scope of works – Terracotta 2	Yes	No
Does the supplier comply with the scope of works?	✓	X
<ul style="list-style-type: none"> Supply “Black Granite look” post-formed top, 1.5m long and 600mm wide, with one under-counter cupboard and drawer on the right hand side. The cupboard and drawer will be 500mm wide and 600mm deep. The material for the cupboard and drawer will be Bavarian Beech and each will require a handle 		
<ul style="list-style-type: none"> Supply one Meranti mirror frame to fit a 1.8m x 800mm mirror. The frame must have routed inner and outer edge. Frame must be 100mm wide and 16mm thick with dark stain. 		
<ul style="list-style-type: none"> Supply one cupboard without doors. The cupboard will be 1.2m wide and 2.0m high, it will be 500mm deep. It needs to have a 250mm space to store shoes below the hanging space. The material for the cupboard will be Bavarian Beech. 		

2.2. Terracotta 3

Scope of works – Terracotta 3	Yes	No
Does the supplier comply with the scope of works?	✓	X
<ul style="list-style-type: none"> Supply “Black Granite look” post-formed top, 1.5m long and 600mm wide, with one under-counter cupboard and drawer on the right hand side. The cupboard and drawer will be 500mm wide and 600mm deep. The material for the cupboard and drawer will be Bavarian Beech and each will require a handle. 		

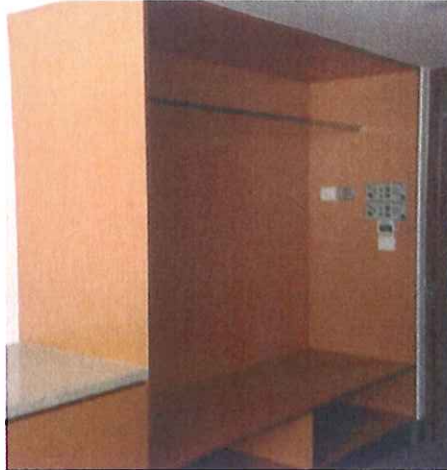
Scope of works – Terracotta 3 ..continued	Yes	No
Does the supplier comply with the scope of works?	✓	X
<ul style="list-style-type: none"> Supply one Meranti mirror frame to fit a 1.8m x 800mm mirror. The frame must have routed inner and outer edge. Frame must be 100 mm wide and 16mm thick with dark stain. 		
<ul style="list-style-type: none"> Supply one cupboard without doors. The cupboard will be 1.0m wide and 2.0m high, it will be 500mm deep. It needs to have a 250mm space to store shoes below the hanging space. The material for the cupboard will be Bavarian Beech. 		

2.3. Terracotta 4

Scope of works – Terracotta 4	Yes	No
Does the supplier comply with the scope of works?	✓	X
<ul style="list-style-type: none"> Supply “Black Granite look” post-formed top, 3.75m long and 600mm wide, with two separate under-counter cupboards and drawers dividing the counter into three spaces. The cupboards and drawers will be 500mm wide and 600mm deep. The material for the cupboard and drawer will be Bavarian Beech and each will require a handle. 		
<ul style="list-style-type: none"> Supply one Meranti mirror frame to fit a 1.8m x 800mm mirror. The frame must have routed inner and outer edge. Frame must be 100 mm wide and 16mm thick with dark stain. 		
<ul style="list-style-type: none"> Supply one cupboard without doors. The cupboard will be 1.5m wide and 2.0m high and 500mm deep. It needs to have a 250mm space to store shoes below the hanging space. The material for the cupboard will be Bavarian Beech. 		

2.4. Terracotta 5

Scope of works – Terracotta 5	Yes	No
Does the supplier comply with the scope of works?	✓	X
<ul style="list-style-type: none"> Supply “Black Granite look” post-formed top, 3.85m long with two separate under-counter cupboards and drawers dividing the counter into three sections. The cupboard and drawers will be 500mm wide and 600mm deep. The material for the cupboard and drawer will be Bavarian Beech and each will require a handle. 		
<ul style="list-style-type: none"> Supply one Meranti mirror frame to fit a 1.8m x 800mm mirror. The frame must have routed inner and outer edge. Frame must be 100 mm wide and 16mm thick with dark stain. 		
<ul style="list-style-type: none"> Supply one cupboard without doors. The cupboard will be 1.5m wide, 2.0m high and 500mm deep. It needs to have a 250mm space to store shoes below the hanging space. The material for the cupboard will be Bavarian Beech. 		



Cupboards will look similar to the photo above.

3. Preconditions

A written proposal/quotation will not be considered unless the service provider who submits the quotation provides the following with their proposal/quotation:

- 3.1 Full name.
- 3.2 Identification or company or other registration number.
- 3.3 Tax reference number and VAT number, if any.
- 3.4 Valid original Tax Clearance Certificate from the South African Revenue Services which proves that the service provider's tax matters are in order.
- 3.5 Valid BBBEE Certificate.
- 3.6 MBD 4 Declaration of Interest form must be completed.
- 3.7 Statement that the company's water, electricity and rates are up to date or formal payment arrangements have been made.

4. Terms and Conditions

It must be noted that the service provider assumes full risk when submitting bid proposals to the Durban ICC.

5. Requirements to submit quotations

- 5.1 All schedules in this document must be populated and will form part of the quotation.
- 5.2 Companies **must** submit a company profile and are to provide examples and references of similar work performed.
- 5.3 A completed ICC Durban (Pty) Ltd supplier application form which is available for download from the Durban ICC website (www.icc.co.za). Alternatively, if the supplier is registered on the Durban ICC database, then the service provider need only submit their supplier number. All the mandatory documents must be included with this application.

6. **Compulsory Pricing Schedule**

Description	Price
Terracotta 2	
<ul style="list-style-type: none"> Supply "Black Granite look" post-formed top, 1.5m long and 600mm wide, with one under-counter cupboard and drawer on the right hand side. The cupboard and drawer will be 500mm wide and 600mm deep. The material for the cupboard and drawer will be Bavarian Beech. Handles must be supplied. 	R
<ul style="list-style-type: none"> Supply one mirror frame to fit a 1.8m x 800mm mirror. The frame must have routed inner and outer edge. Frame must be 100mm wide and 16mm thick with dark stain. 	R
<ul style="list-style-type: none"> Supply one cupboard without doors. The cupboard will be 1.2m wide and 2.0m high, it will be 400mm deep. It needs to have a 250mm space to store shoes below the hanging space. The material for the cupboard will be Bavarian Beech. 	R
Terracotta 3	
<ul style="list-style-type: none"> Supply "Black Granite look" post-formed top, 1.5m long and 600mm wide, with one under-counter cupboard and drawer on the right hand side. The cupboard and drawer will be 500mm wide and 600mm deep. The material for the cupboard and drawer will be Bavarian Beech. Handles must be supplied. 	R
<ul style="list-style-type: none"> Supply one mirror frame to fit a 1.8m x 800mm mirror. The frame must have routed inner and outer edge. Frame must be 100 mm wide and 16mm thick with dark stain. 	R
<ul style="list-style-type: none"> Supply one cupboard without doors. The cupboard will be 1.0m wide and 2.0m high, it will be 400mm deep. It needs to have a 250mm space to store shoes below the hanging space. The material for the cupboard will be Bavarian Beech. 	R
Terracotta 4	
<ul style="list-style-type: none"> Supply "Black Granite look" post-formed top, 3.75m long and 600mm wide, with two separate under-counter cupboards and drawers dividing the counter into three spaces. The cupboards and drawers will be 500mm wide and 600mm deep. The material for the cupboard and drawer will be Bavarian Beech. Handles must be supplied. 	R
<ul style="list-style-type: none"> Supply one mirror frame to fit a 1.8m x 800mm mirror. The frame must have routed inner and outer edge. Frame must be 100 mm wide and 16mm thick with dark stain. 	R
<ul style="list-style-type: none"> Supply one cupboard without doors. The cupboard will be 1.5m wide and 2.0m high and 400mm deep. It needs to have a 250mm space to store shoes below the hanging space. The material for the cupboard will be Bavarian Beech. 	R



Description	Price
Terracotta 5	
<ul style="list-style-type: none"> Supply "Black Granite look" post-formed top, 3.85m long with two separate under-counter cupboards and drawers dividing the counter into three sections. The cupboard and drawers will be 500mm wide and 600mm deep. The material for the cupboard and drawer will be Bavarian Beech. Handles must be supplied. 	R
<ul style="list-style-type: none"> Supply one mirror frame to fit a 1.8m x 800mm mirror. The frame must have routed inner and outer edge. Frame must be 100 mm wide and 16mm thick with dark stain. 	R
<ul style="list-style-type: none"> Supply one cupboard without doors. The cupboard will be 1.5m wide, 2.0m high and 400mm deep. It needs to have a 250mm space to store shoes below the hanging space. The material for the cupboard will be Bavarian Beech. 	R
Subtotal (Vat Excl.)	
Vat @ 14%	
Grand Total (Vat Incl.)	

Note: The Durban ICC is not liable to make any deposit payments upfront.

I.....being duly authorized thereto by do hereby confirm that the information contained herein is true and correct and acknowledge that, should it be established that any of the information contained herein is false and incorrect, my company may be disqualified from quoting to the Durban ICC.

Signature: _____ **Date:** _____






Note: Failure of a Service Provider to complete and sign this page will invalidate the quotation

7. **Contact Person**
 Jerry Hurter – Facility Director
 Tel: 031 360 1200
 Email: jerryh@icc.co.za

8. **Closing Date**
 Quotations, together with this document and supplier registration forms are to be placed in a sealed envelope marked for the attention of the Procurement Department and are to be placed in the Tender Box at the Durban ICC security entrance on the ground floor, 45 Bram Fischer Road Durban before **12h00, 27 November 2014**



Request for proposals approved by:

 _____ Facilities Director J.C. Hurter
 _____ SCM Compliance Ritesh Ramkissoon
 _____ SCM Manager Thenashree Naidoo
 17/11/14 _____ Finance Director Melanie Rambally
 _____ Acting Chief Executive Officer Nicolette Elia-Beissel



9. Past experience in similar assignments

Assignment Description	Key Elements	Date Completed	Contact Person and Telephone Number	Assignment Value

I.....being duly authorized thereto bydo hereby confirm that the information contained herein is true and correct and acknowledge that, should it be established that any of the information contained herein is false and incorrect, my company may be disqualified from quoting to the Durban ICC.

Name: *(Block Capitals)* _____

Signature: _____ Date: _____

10. Declaration of Municipals Fees

I / we do hereby declare that the Municipal fees of the company:-

.....
(Company Name)

are, as at the date of the quotation closing, fully paid up, or arrangements have been concluded with the Municipality to pay the said fees :

Account	Account Number *
Electricity	
Water	
Rates	

*** to be completed by Service Provider.**

I / we acknowledge that should it be found that Municipal fees are not up to date, the Council may take such remedial action as is required, including termination of contract and any income due to the Company shall be utilized to offset any monies due to the Council.

In addition to completion of the above – **please attach a copy of your Metro Bill**

Name: (Block Capitals) _____

Signature: _____ **Date:** _____
(of person authorized to sign on behalf of the Tenderer)

11. MBD4 Declaration of Interest

12.1. No bid will be accepted from persons in the service of the state¹.

12.2 Any person, having a kinship with persons in the service of the state, including a blood relationship, may make an offer or offers in terms of this invitation to bid. In view of possible allegations of favouritism, should the resulting bid, or part thereof, be awarded to persons connected with or related to persons in service of the state, it is required that the bidder or their authorised representative declare their position in relation to the evaluating/adjudicating authority.

12.3 In order to give effect to the above, the following questionnaire must be completed and submitted with the bid.

12.3.1 Full name of bidder or his/her representative

12.3.2 Identity number:

12.3.3 Position occupied in the Company (director, trustee, shareholder²):

.....

12.3.4 Company Registration Number:

12.3.5 Tax Reference Number:

12.3.6 VAT Registration Number:

12.3.7 The names of all directors / trustees / shareholders members, their individual identity numbers and state employee numbers must be indicated in paragraph 4 below.

References:

¹ MSCM Regulations: "in the service of the state" means to be –

(a) a member of –

- any municipal council
- any provincial legislature
- the National Assembly or the National Council of Provinces

(b) a member of the board of directors of any municipal entity;

(c) an official of any municipality or municipal entity;

(d) an employee of any national or provincial department, national or provincial public entity or constitutional institution within the meaning of the Public Finance Management Act, 1999 (Act No.1 of 1999);

(e) a member of the accounting authority of any national or provincial public entity;

(f) an employee of parliament or a provincial legislature.

² "Shareholder" means a person who owns shares in the company and is actively involved in the management of the company or business and exercises control over the company.

12.3.8 Are you presently in the service of the state?
If yes, furnish particulars:

YES	NO
-----	----

12.3.9 Have you been in the service of the state for the past twelve months? If yes, furnish particulars:

YES	NO
-----	----

12.3.10 Do you have any relationship (family, friend, other) with persons in the service of the state and who may be involved with the evaluation and/or adjudication of this bid?
If yes, furnish particulars:

YES	NO
-----	----

12.3.11 Are you aware of any relationship (family, friend, other) between any other bidder and any persons in the service of the state who may be involved with the evaluation and/or adjudication of this bid? If yes, furnish particulars:

YES	NO
-----	----

12.3.12 Are any of the company's directors, trustees, managers, principal shareholders or stakeholders in service of the state?
If yes, furnish particulars:

YES	NO
-----	----

12.3.13 Is any spouse, child or parent of the company's directors, trustees, managers, principal shareholders or stakeholders in service of the state? If yes, furnish particulars:

YES	NO
-----	----

12.3.14 Do you or any of the directors, trustees, managers, principal shareholders or stakeholders of this company have any interest in any other company or business whether or not they are bidding for this contract? If yes, furnish particulars:

YES	NO
-----	----

12.4. Full details of directors / trustees / members / shareholders

Full Name	Identity Number	State Employee No.

Signature

Date

Capacity

Name of Bidder